

# SmartLF Gx+ 56

INNOVATION IN WIDE FORMAT SCANNERS AND SOFTWARE



Extra-Wide Format Scanners for  
Specialist Applications & Service  
Providers

SUITABLE FOR:  
REPROGRAPHICS, MAPPING & GIS,  
AERONAUTICS & AUTOMOTIVE AND OTHER  
OVER SIZE LARGE FORMAT DOCUMENTS

Go 'super-size' with SmartLF Gx+ 56 extra-wide scanners. Capable of scanning landscape A0/E-size documents and mounted originals (T model option), these scanners provide the ultimate format flexibility for service providers and other users with specialist over-size documents. Offering 600dpi high definition (HD) optical resolution, superior color CCD technology and the cost / performance benefits of instant-on LED illumination, these scanners provide crisp, sharp fine line detail found in technical documents and maps with accurate color reproduction of artwork, photographs and graphics originals.

## WHEN **SIZE** MATTERS



## Key Features

### EXTRA-WIDE FORMAT SCANNERS

- ◆ 600dpi high definition (HD) optical resolution
- ◆ 56in image width - perfect for scanning oversize documents & landscape A0/E-size
- ◆ **NEW** Includes SmartWorks EZ SCAN/COPY/EMAIL software
- ◆ Sharp, crisp fine image detail - superb black & white with high fidelity color capture
- ◆ CCD<sup>1</sup> technology with extra long-life, instant-on, unique bi-directional LED<sup>2</sup> illumination
- ◆ High density 48-bit color graphics and 16-bit monochrome data capture
- ◆ Reliable paper feed from advanced 2+4 all-wheel-drive
- ◆ Scans media up to 0.8in (20mm) with Gx+ T56 - suits ALL graphics & technical documents
- ◆ On-site upgrade from monochrome to color and express color
- ◆ Fast, high quality scans from power-on, no warm-up, no waiting!
- ◆ Compact, space saving design with low power consumption, ENERGY STAR® Qualified
- ◆ Low maintenance costs with easy USB2 connectivity
- ◆ High productivity - scan A0/E-size documents FAST at 9ips @ 200dpi mono and 3ips color
- ◆ Offers the EXTRA versatility and capability professional service providers require - at an affordable price

Colortrac has the longest experience of manufacturing CCD-based wide format color scanners. The SmartLF Gx+ 56 scanners offer a combination of long-life, maintenance free bi-directional LEDs with power saving ENERGY STAR® compliance and high productivity scanning speeds. The 6th generation SmartLF Gx+ CCD scanner ranges define a new industry benchmark for high fidelity color, monochrome tone reproduction and image sharpness.



CAD and Technical Drawings



Image Enhancement

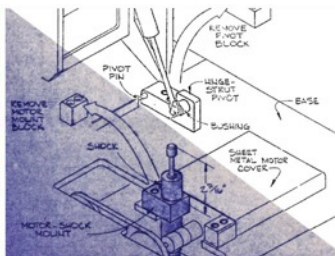


Image Restoration



Aerospace & Satellite Imaging

All SmartLF scanners are available in three affordable specification levels: monochrome, color and express color, (m, c, e). m and c models can be easily upgraded via unique email process if requirements change.

## Because you need large format scanning solutions that work for you:

SmartLF Gx+ 56 scanners include SmartWorks EZ SCAN/COPY/EMAIL software that combines wide format scanning and copying in one very easy to use program and has full compatibility with wide format printers through standard Windows drivers.

SmartWorks EZ is optimized for use with touchscreen monitors using a simple, intuitive user interface suitable for general office use.



**SmartWorks EZ software - Everything you need is IN THE BOX!**

### Colortrac recommends:

SmartWorks Pro SCAN & COPY software for more demanding users.

The professional option with Colortrac's 'scan once' workflow for unrivalled control & productivity.

Includes Intelligent Adaptive Thresholding (IAT) - voted "Best in Class" and receiving 4.5 Star OUTSTANDING rating by BERTL.

# Specifications

	<b>Gx+ 56m/Gx+ T56m</b>	<b>Gx+ 56c/Gx+ T56c</b>	<b>Gx+ 56e/Gx+ T56e</b>
	Mono/Grayscale	+Color	+Express Color
Upgradeable	m → c m → e	c → e	N/A
Optical Resolution	600dpi	600dpi	600dpi
Interpolated Resolution	9600dpi	9600dpi	9600dpi
Max Scan Width	56in (142.3cm)	56in (142.3cm)	56in (142.3cm)
Max Media Width	61.8in (157cm)	61.8in (157cm)	61.8in (157cm)
Max Media Thickness	0.08in (2mm)/0.8in (20mm)	0.08in (2mm)/0.8in (20mm)	0.08in (2mm)/0.8in (20mm)
Accuracy	+/-0.1% +/-1 pixel	+/-0.1% +/-1 pixel	+/-0.1% +/-1 pixel
Imaging Technology	8 x CCD	8 x CCD	8 x CCD
Data Capture (color/grayscale)	16-bit	48-bit/16-bit	48-bit/16-bit
Color Space	N/A	RAW RGB/sRGB	RAW RGB/sRGB
Scan Speed 1-bit mono (in/sec) @200dpi	9.00	9.00	9.00
Scan Speed 8-bit grayscale (in/sec) @200dpi	9.00	9.00	9.00
Scan Speed 24-bit color (in/sec) @200dpi	N/A	1.50	3.00
Paper Path	Face-down, front entry, rear exit		
Interface	High Speed USB 2.0/Gigabit Ethernet network-ready		
Power Requirements	External power supply 100-250 VAC autosensing +/-10%, 50 - 60 Hz Power consumption 72Wh (scanning) / 5.7Wh (standby)		
Weight & Dimensions (WxHxD)	126lbs (57kg) 72.5in x 7in x 14.6in (184 x 18 x 37cm)		
Host Platform	Windows XP, Windows Vista, Windows 7, 32-bit and 64-bit architectures		
Certifications	CB, CE, FCC, UL, RoHS. ENERGY STAR <sup>®</sup>		
Included Software	SmartWorks EZ SCAN/COPY/EMAIL software - supports TIFF, JPEG, PNG & PDF; WIA/STI interface		
Optional Software	SmartWorks Pro SCAN, COPIER or SCAN & COPY software - industry leading, professional scanning and color-copying software		
Accessories	Floor stand, Paper catch basket, PC and monitor mounting kit (floor stand required)		

<sup>1</sup>CCD (Charged coupled device). <sup>2</sup>Unlike fluorescent tubes, LEDs only come on when scanning and have an estimated working-life of 50,000 hours or 6 years scanning 24/7.

[For full details of host system requirements please go to: [http://www.colortrac.com/support/system\\_requirements.htm](http://www.colortrac.com/support/system_requirements.htm).] Colortrac Ltd makes no warranty of any kind with respect to the information contained in this document and reserves the right to change specifications without notice. Colortrac and Smart LF<sup>®</sup> are trademarks of Colortrac Ltd. All other trademarks are the property of their respective owners. Copyright © 2011 Colortrac Ltd. COLORTRAC SMARTLF WIDE FORMAT SCANNERS ARE DESIGNED AND MANUFACTURED BY COLORTRAC.

Version: 110311

YOUR COLORTRAC STOCKIST

### Colortrac Limited

Colortrac HQ and Factory  
 3-5 Brunel Court, Burrell Road,  
 St Ives, Cambs PE27 3LW, UK  
 Tel: +44 1480 464618  
 Fax: +44 1480 464620

### Colortrac Inc.

4431-A Brookfield Corporate Drive  
 Chantilly, Virginia 20151, USA  
 Tel: +1 703 717 5631  
 Fax: +1 703 717 5361

### Colortrac Japan

12th floor, 1203  
 Yokohama Creation Square,  
 5-1 Sakae-Cho  
 Kanagawa-Ku, Yokohama-Shi  
 Kanagawa-Ken  
 221-0052 Japan  
 Tel: +81(0)45 548 6991  
 Fax: +81(0)45 548 6992

### Colortrac Limited (Beijing)

Room 1208, ZhongGuanCun Technology Development  
 Building C, No.34 Zhong Guan Cun South Street  
 HaiDian District, Beijing 100081, P.R. China  
 Tel: +86 (0) 10 62124936  
 Fax: +86 (0) 10 62124770

[www.colortrac.com](http://www.colortrac.com)