

# SmartLF Gx+ T56

INNOVATION IN WIDE FORMAT SCANNERS AND SOFTWARE



## Extra-Wide Format Scanners for Specialist Applications & Service Providers

SUITABLE FOR:  
REPROGRAPHICS, MAPPING & GIS,  
AERONAUTICS & AUTOMOTIVE AND OTHER  
OVER SIZE LARGE FORMAT DOCUMENTS

Go 'super-size' with SmartLF Gx+ T56 extra-wide scanners. Capable of scanning landscape A0/E-size documents and mounted originals (T model option), these scanners provide the ultimate format flexibility for service providers and other users with specialist over-size documents. Offering 600dpi high definition (HD) optical resolution, superior color CCD technology and the cost / performance benefits of instant-on LED illumination, these scanners provide crisp, sharp fine line detail found in technical documents and maps with accurate color reproduction of artwork, photographs and graphics originals.

## WHEN **SIZE** MATTERS



Key Features



## Key Features

### EXTRA-WIDE FORMAT SCANNERS

- ❑ 600dpi high definition (HD) optical resolution
- ❑ 56in image width – perfect for scanning oversize documents & landscape A0/E-size
- ❑ Includes SmartWorks EZ SCAN/COPY/EMAIL software
- ❑ Sharp, crisp fine image detail - superb black & white with high fidelity color capture
- ❑ CCD<sup>1</sup> technology with extra long-life, instant-on, unique bi-directional LED<sup>2</sup> illumination
- ❑ High density 48-bit color graphics and 16-bit monochrome data capture
- ❑ Reliable paper feed from advanced 2+4 all-wheel-drive
- ❑ Scans media up to 0.8in (20mm) – suits ALL graphics & technical documents
- ❑ On-site upgrade from monochrome to color and express color
- ❑ Fast, high quality scans from power-on, no warm-up, no waiting!
- ❑ Compact, space saving design with low power consumption
- ❑ Low maintenance costs with easy USB2 connectivity
- ❑ High productivity - scan A0/E-size documents FAST at 9ips @ 200dpi mono and 3ips color
- ❑ Offers the EXTRA versatility and capability professional service providers require - at an affordable price

Colortrac has the longest experience of manufacturing CCD-based wide format color scanners. The SmartLF Gx+ 56 scanners offer a combination of long-life, maintenance free bi-directional LEDs with power saving and high productivity scanning speeds. The 6th generation SmartLF Gx+ CCD scanner ranges define a new industry benchmark for high fidelity color, monochrome tone reproduction and image sharpness.



CAD and Technical Drawings



Image Enhancement

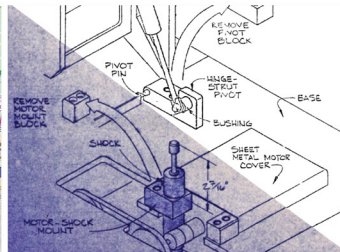


Image Restoration



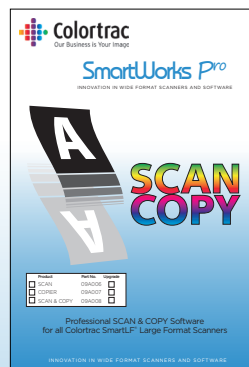
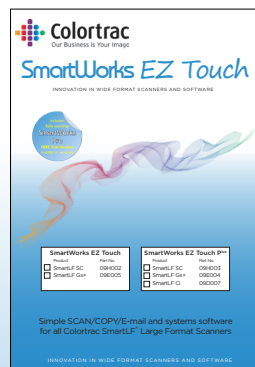
Aerospace & Satellite Imaging

All SmartLF scanners are available in three affordable specification levels: monochrome, color and express color, (m, c, e). m and c models can be easily upgraded via unique email process if requirements change.

## Because you need large format scanning solutions that work for you:

SmartLF Gx+ T56 scanners include SmartWorks EZ Touch SCAN/COPY/EMAIL software that combines wide format scanning and copying in one very easy to use program and has full compatibility with wide format printers through standard Windows drivers.

SmartWorks EZ Touch is optimized for use with touchscreen monitors using a simple, intuitive user interface suitable for general office use.



## Colortrac recommends:

SmartWorks Pro SCAN & COPY software for more demanding users.

The professional option with Colortrac's 'Scan Once' workflow and Intelligent Adaptive Thresholding (IAT) for unrivalled image quality and full control of the image color with integrated ICC color management. With 10 Preset Filters that give operators full control over the format of the scan file, SmartWorks Pro gives you the productivity and quality tools to match your large format scanning needs.

	<b>Gx+ T56m</b>	<b>Gx+ T56c</b>	<b>Gx+ T56e</b>
	Mono/Grayscale	+Color	+Express Color
Upgradable	m → c m → e	c → e	n/a
Scanner Optical Resolution	600 dpi	600 dpi	600 dpi
Software Scan Resolution	100 to 600 dpi with SmartWorks EZ Touch & Touch Plus; up to 9600 <sup>1</sup> dpi (interpolated) with SmartWorks Pro		
Max Scan Width	56in (142.3 cm)	56in (142.3 cm)	56in (142.3 cm)
Max Media Width	61.8in (157 cm)	61.8in (157 cm)	61.8in (157 cm)
Max Media Thickness	0.08in (2.0 mm) / 0.8in (20mm)	0.08in (2.0 mm) / 0.8in (20mm)	0.08in (2.0 mm) / 0.8in (20mm)
Imaging Technology	8 x CCD	8 x CCD	8 x CCD
Scan Accuracy	+/-0.1% +/-1 pixel	+/-0.1% +/-1 pixel	+/-0.1% +/-1 pixel
Max Image Length <sup>5</sup>	The maximum image length using SmartWorks EZ Touch is 96" (2438mm). The maximum resolution & size (width & length) for a SmartWorks Pro image is limited by the file format specified, the available disk space and the computer operating system.		
Data Capture (color/grayscale)	16-bit	48-bit / 16-bit	48-bit / 16-bit
Color Space	n/a	Raw RGB from scanner sRGB using SmartWorks EZ Touch Profiled RGB from optional SmartWorks Pro	Raw RGB from scanner sRGB using SmartWorks EZ Touch Profiled RGB from optional SmartWorks Pro
Scan Speed - 1-bit mono (in/sec) @200dpi	9.00	9.00	9.00
Scan Speed - 8-bit grayscale (in/sec) @200dpi	9.00	9.00	9.00
Scan Speed - 24-bit color (in/sec) @200dpi	n/a	1.50	3.00
Paper Path	Face-down, Front entry, Rear exit		
Interface	High Speed USB 2.0 / Gigabit Ethernet network-ready		
Power Requirements	External power supply 100-240VAC auto-sensing +/-10%, 50-60Hz Scanner power consumption: 72Wh (scanning) / 5.7Wh (standby)		
Operating Conditions <sup>6</sup>	10°C – 35°C, 35% – 80% Relative Humidity non-condensing		
Weight & Dimensions (WxHxD)	126 lbs (57 kg) 72.5in x 7.0in x 14.6in (184 x 18 x 37 cm)		
Host Platform	Windows 8, Windows 7, Windows Vista, Windows XP <sup>8</sup> - 32-bit and 64-bit architectures		
Certifications	CB, CE, CCC, FCC, UL, RoHS compliant and ENERGY STAR qualified		
Included Software <sup>7</sup>	<b>SmartWorks EZ Touch</b> - Touch Screen SCAN/COPY/E-MAIL software - supports TIFF, TIFFG4, JPEG, PNG & PDF		
Optional Software <sup>7</sup>	<b>SmartWorks EZ Touch Plus</b> - Touch Screen SCAN & COPY software adds image edit features & user adjustable document presets <b>SmartWorks Pro</b> - SCAN & COPY software - industry leading, professional scanning and color-copying software		
Accessories	Floor Stand, Paper Catch Basket, PC and Monitor Mounting Kit (floor stand required)		

**Notes:**  
**1** - Colortrac does not guarantee quoted speeds for thicker media. Thicker media should be scanned at reduced speeds to obtain optimal image quality. **2** - The scan rate is proportional across the full range of resolutions supported by the scanner. Actual scan times and quoted top speeds will depend on the host performance and are not guaranteed for all media types. **3** - True 200 x 200dpi image capture. Competitors quote scan speeds using 'Turbo', 'Normal' or 'High Speed' modes that reduce image quality whilst suggesting that scan resolution is doubled. These modes use software interpolation to create 'virtual image pixels' from a lower resolution scan thereby increasing the number of pixels in the scan direction (&/or X-direction) in an attempt to simulate higher image resolution. Colortrac SmartLF scanners are designed to scan images fast at the optimum resolution required to capture the original image detail without compromising quality. **4** - The achieved scan accuracy may vary depending on the operating environment and the type & thickness of media. **5** - The maximum resolution & size (width & length) selectable for an image depends on the scan software, is limited by the file format specified, the available disk space and the computer operating system. **6** - Operation in mobile, dusty or variable temperature environments may require more frequent scanner maintenance. **7** - SmartWorks EZ Touch & SmartWorks EZ Touch PLUS support PC monitors of 15" to 23" with minimum height resolution of 800 pixels or better as a full screen application. The scanner may need to be slowed down for high scan resolutions and/or wider documents. This is a limitation of Windows XP.

For full details on specification, performance and interpolated dpi, please refer to <http://www.colortrac.com/scanner/smartlf-gx-t56/>  
 For full details of host system requirements please go to: [http://www.colortrac.com/support/system\\_requirements/](http://www.colortrac.com/support/system_requirements/)

Colortrac Ltd makes no warranty of any kind with respect to the information contained in this document and reserves the right to change specifications without notice. Colortrac and SmartLF<sup>®</sup> are trademarks of Colortrac Ltd. All other trademarks are the property of their respective owners. Copyright © 2014 Colortrac Ltd. Colortrac SmartLF Wide Format Scanners are designed by Colortrac and manufactured in our ISO-9001:2000 certified manufacturing plant.

## YOUR COLORTRAC STOCKIST

**Colortrac Limited**  
 COLORTRAC HQ AND FACTORY  
 3-5 Brunel Court, Burrell Road,  
 St Ives, Cambs PE27 3LW, UK  
 Tel: +44 1480 464618  
 Fax: +44 1480 464620

**Colortrac Inc.**  
 14155 Sullyfield Circle, Suite C  
 Chantilly, Virginia 20151, USA  
 Tel: +1 703 717 5631  
 Fax: +1 703 717 5361

**Colortrac Japan**  
 12th Floor, 1203  
 Yokohama Creation Square  
 5-1 Sakae-Cho  
 Yokohama-Shi, Kanagawa-ken  
 Japan 221-0052  
 Tel: +81 (0) 45 548 6991  
 Fax: +81 (0) 45 548 6992

**Colortrac Limited (Beijing)**  
 Room 1208, ZhongGuanCun Technology  
 Development Building C,  
 No.34 Zhong Guan Cun South Street  
 HaiDian District, Beijing 100081, P.R. China  
 Tel: +86 (0) 10 62124936  
 Fax: +86 (0) 10 62124770